



SHREE RAMA MULTI-TECH LIMITED

SHREE RAMA MULTI-TECH LTD.



Meeting Every Challenge, Exceeding Every Expectation



About SRMTL

01

SRMTL was founded in 1995, public listed in 2000. Now SRMTL is under Nirma Group of Companies.

02

SRMTL is a leading integrated packaging Company in India. SRMTL is one of the largest Laminated Tube manufacturing Company in India having footprint across the world.

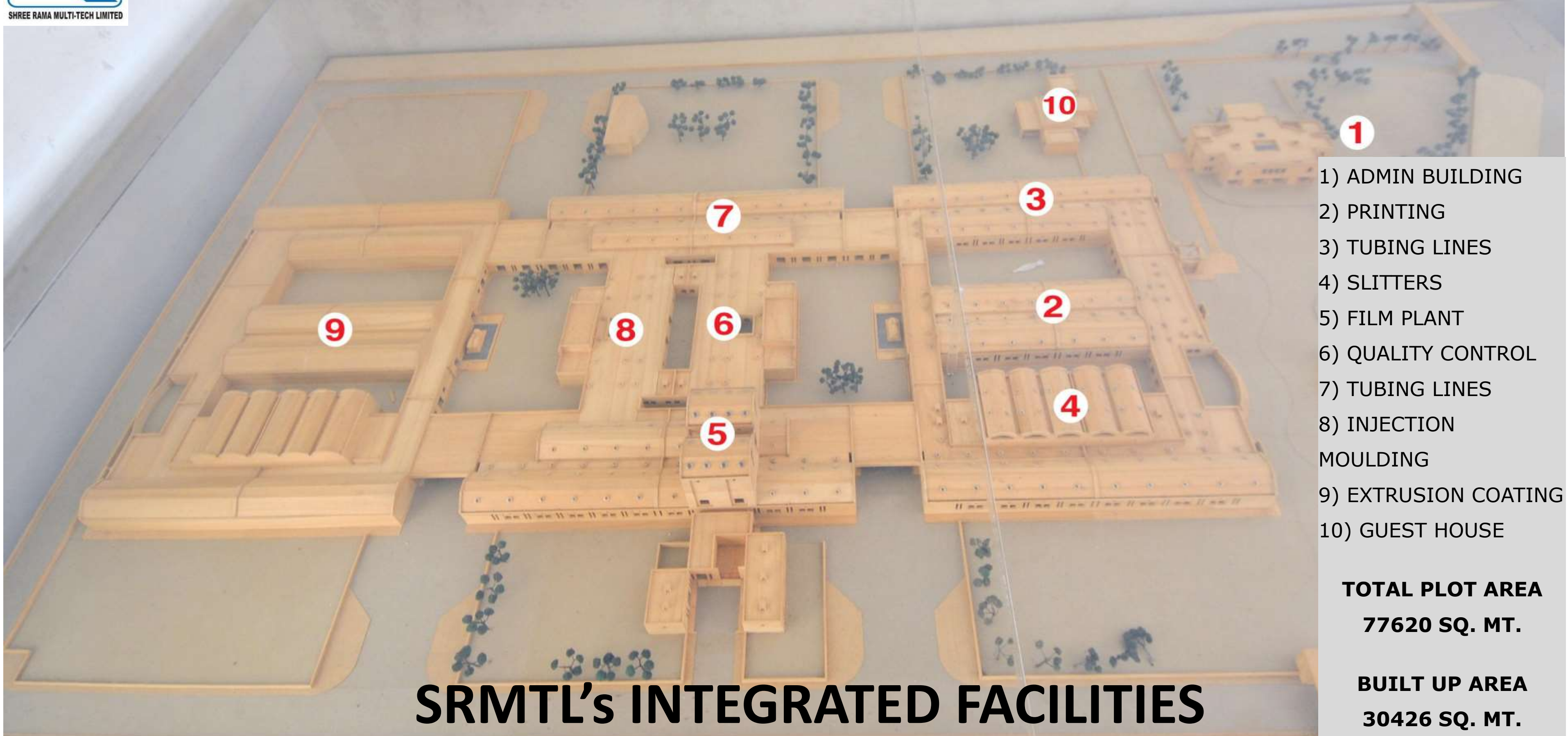
03

SRMTL is amongst very few fully integrated plants in the world starting from Films, Laminates, Printing and Laminated Tubes.

04

SRMTL is a certified ISO 9001:2015, ISO 15378:2017 (GMP), GMI & DMF type III Company.

BIRD'S EYE VIEW



- 1) ADMIN BUILDING
- 2) PRINTING
- 3) TUBING LINES
- 4) SLITTERS
- 5) FILM PLANT
- 6) QUALITY CONTROL
- 7) TUBING LINES
- 8) INJECTION MOULDING
- 9) EXTRUSION COATING
- 10) GUEST HOUSE

TOTAL PLOT AREA
77620 SQ. MT.

BUILT UP AREA
30426 SQ. MT.

SRMTL's INTEGRATED FACILITIES

Types of Business

SRMTL has a unique setup in packaging industry with diversified portfolio such as;



**Multilayer Laminated
Tubes
ABL & PBL**

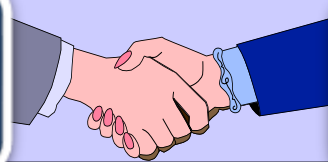


**Tube Laminates
ABL & PBL**

These priorities align with our mission and vision.

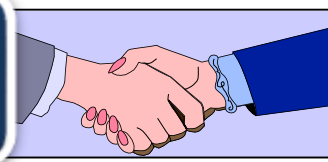
SRMTL's TECHNICAL COLLABORATIONS

Multi layer film



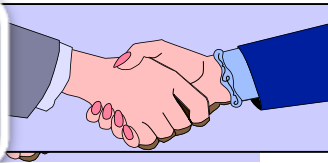
Reifenhauser, Germany

Extrusion Coating



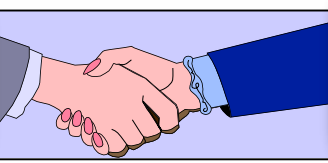
Davis Standard, Germany

Slitters



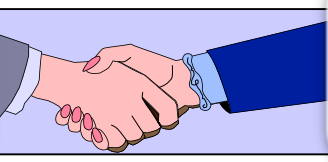
KAMPF, Germany & STANFORD, USA

Printing



Taiyo Kikai, Japan

Laminated Tubes



AISA & PSG, Switzerland



SRMTL’S PRODUCTION CAPACITY

PLANTS	UNIT	MONTHLY CAPACITY	ANNUAL CAPACITY
FILM PLANT	MT	600	7200
EXTRUSION COATING	Million Sq. Mtrs.	5	60
PRINTING – LAMINATE (UV Letter Press)	Million Sq. Mtrs.	1	12
MULTI LAYER TUBES DIA. 13, 16, 19, 22, 25, 28, 30, 32, 35, 40, and 50 mm. LENGTH 50 MM TO 193 MM	Million	78	936

List of Machineries - Tubing

- **KLT** : Tailor-made by AISA (total 5 machines) for SRMTL with online shoulder molding facility, speed 180 tubes per minute with automatic capping device and packing facility
- **AISA** : 800(1) /1000(1)/150(3) / 100(3) series - Tailor-made tubing machines (total 8 machines) with automatic capping, temper evident sealing and packing facility
- **KOMBIS** : STS Bulgarian made tubing machine with rotary type sleeve cutting machines (Total – 3 nos.)
- **PSG** : We have 4 PSG machines with online shoulder molding facility with temper evident sealing facility and auto-capping device





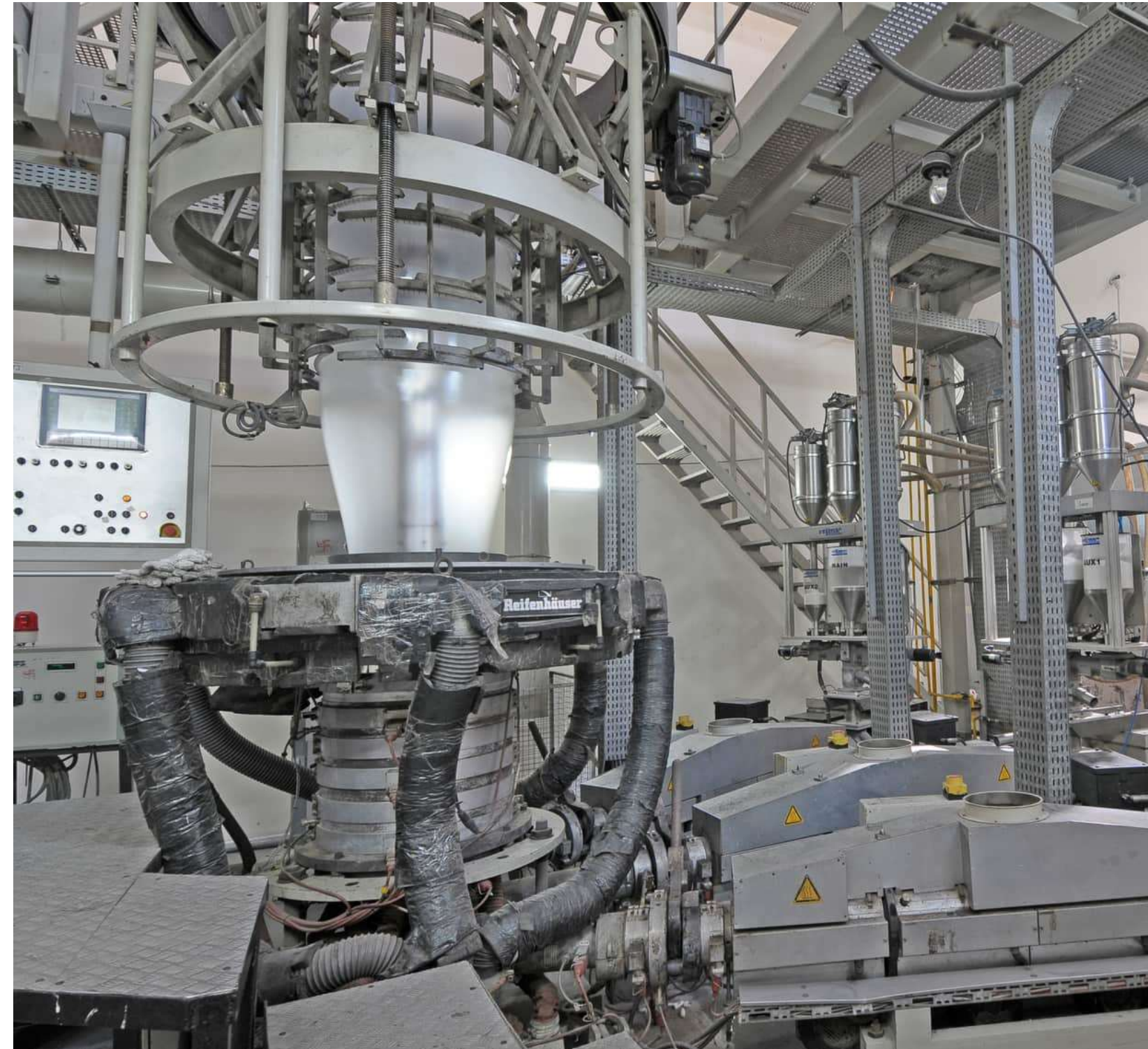
List of Machineries - Printing

- **Pre Press Facility** : We have in-house CTP facilities for pre-press and plate activities, using latest software.
-
- **UV Printing Machines** : We use Taiyo-Japan machine for printing. Machine have capabilities of 6 colors printing along with flexo varnish coating. Print width cab be varied up to 250 - 380 mm.
-
- **Total no. of machines: 5 Nos**



list of Machineries - Extrusion

- Multi-layer Blown Film Plant from Reifenhäuser, Germany.
-
- The Film Plant has production capacity of 600MT per month.





List of Machineries - Lamination

- Extrusion Coating and lamination Machine from Davis Standard (ER- WE- PA), Germany.
-
- The laminator has monthly production capacity of 5 million Square meters per month at operational speed of 200 meters/minute.





List of Tube Laminates & Flexible Laminate

- ABL 9/175 (White & Silver)
- ABL 12/175 (White & Silver)
- ABL 9/200 (White & Silver)
- ABL 12/200 (White & Silver)
- ABL 12/220 (White & Silver)
- ABL 12/250 (White & Silver)
- ABL 20/275 (White & Silver)
- ABL 20/275 Double Barrier (White & Silver)
- ABL 12/275 Double Barrier (White & Silver)
- ABL 12/250 Double Barrier (White & Silver)
- ABL 25/305 (White & Silver)
- PBL 11/220 (Transparent & White)
- PBL 5/250 (Transparent & White)
- PBL 15/250 (Transparent & White)
- PBL 5/275 (Transparent & White)
- PBL 15/275 (Transparent & White)
- PBL 5/300 (Transparent & White)
- PBL 15/300 (Transparent & White)
- PBL 15/350 (Transparent & White)
- PBL 15/400 (Transparent & White)
- Recyclable PBL
- PAPER BASED LAMINATE

etc....



SRMTL'S TANDEM CO-EXTRUSION LAMINATOR TECHNOLOGICAL ADVANCE IN THE FIELD OF PACKAGING

1. Sophisticated Process control systems
2. Auto Dies for Thickness Control
3. Tension Control for wide variety of Product
4. On-line Corona - Flame Treatment
5. Versatility
6. Auto – Splicing
7. On-line thickness checking scanner

GMP Practices





THANK YOU